



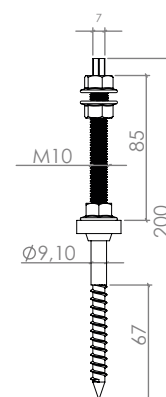
Tetti a falda



Lamiera ondulata

STA10200

Ancorante per legno



Caratteristiche Materiali

Materiale: **X5 CrNi 18-10 (AISI 304)**;

Forma del prodotto: **C (nastro laminato a freddo)**;

Finitura: **2B (nastro trattato termicamente, decapato, skinpassato)**;

Densità: **7,9 g/m³**;

Resistenza alla trazione: **540 – 750 N/mm²**;

Allungamento: **45 % min.**;

Durezza: **82 HRB**.

Caratteristiche Tecniche

Sottostruttura: **Legno**;

Profili compatibili: **PRT2334, PRT2640, PRT2947**;

Guarnizione: **EPDM**.

Certificazioni

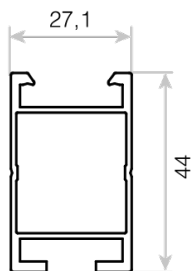
Certificato: **ICIM N. 006DX/3**

Test report: **TECNO-LAB s.r.l.**

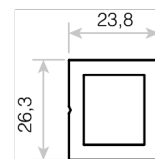


Profili compatibili e rispettive giunzioni

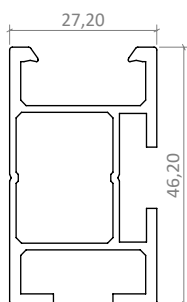
PRT2334-340 3400mm
PRT2334-113 1130mm



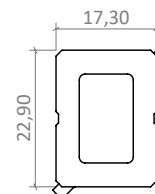
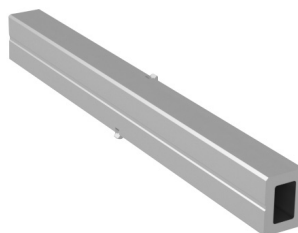
PRL3360



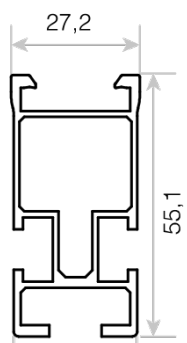
PRT2640-340 3400mm
PRT2640-113 1130mm



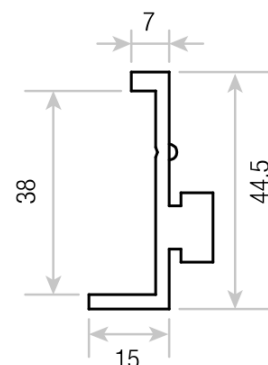
PRG2612



PRT2947-340 3400mm
PRT2947-113 1130mm



PRL2580



Accessori

KMCU2950
Universale centrale



KMTU2950
Universale terminale



ACC0001
ACC0001-M12



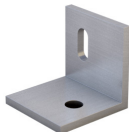
VT1002
Vite testa a martello M10x25



VT0018
Dado flangiato M10



STL4750
STL4750-M12



VT1001
Vite testa a martello M8x25



VT0002
Vite testa a martello M8



VT0006
Dado flangiato M8



VT0009
Rondella M8



VT0001
Vite TE M8x20 - DIN 933



ACC0001-M10D
ACC0001-M12D





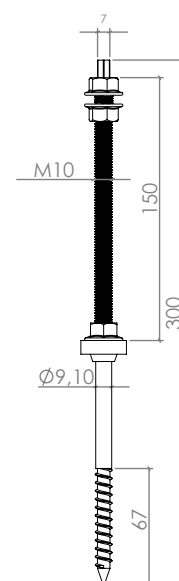
Tetti a falda



Lamiera ondulata

STA10300

Ancorante per legno



Caratteristiche Materiali

Materiale: **X5 CrNi 18-10 (AISI 304)**;
Forma del prodotto: **C (nastro laminato a freddo)**;
Finitura: **2B (nastro trattato termicamente, decapato, skinpassato)**;
Densità: **7,9 g/m³**;
Resistenza alla trazione: **540 – 750 N/mm²**;
Allungamento: **45 % min.**;
Durezza: **82 HRB**.

Caratteristiche Tecniche

Sottostruttura: **Legno**;
Profili compatibili: **PRT2334, PRT2640, PRT2947**;
Guarnizione: **EPDM**;
Carico massimo applicato: **180 Kg**.

Certificazioni

Certificato: **ICIM N. 006DX/3**
Test report: **TECNO-LAB s.r.l.**

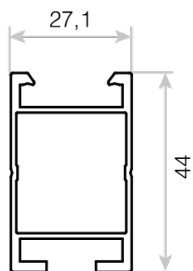


**INTERASSE VITONE INCLINAZIONE FALDA 0° - 15°
1 MODULO CON PROFILI PRT2947**

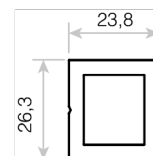
Carico Vento (daN/mq)	Carico Neve (daN/mq)					
	50	70	90	110	130	150
50	1,8 m	1,4 m	1,2 m	1,0 m	0,8 m	0,6 m
70	1,4 m	1,2 m	1,0 m	0,8 m	0,8 m	0,6 m
90	1,2 m	1,2 m	1,0 m	0,8 m	0,6 m	-

Profili compatibili e rispettive giunzioni

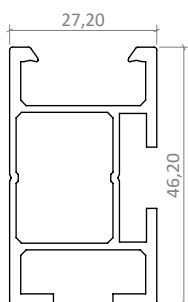
PRT2334-340 3400mm
PRT2334-113 1130mm



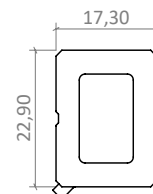
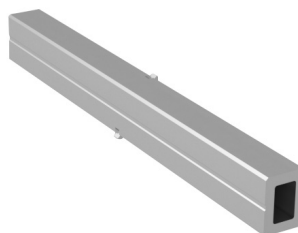
PRL3360



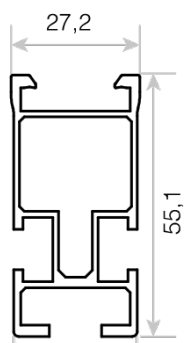
PRT2640-340 3400mm
PRT2640-113 1130mm



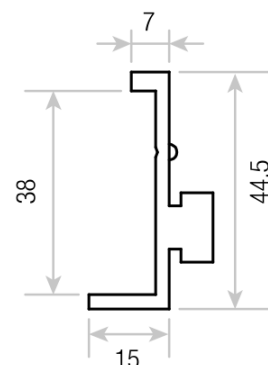
PRG2612

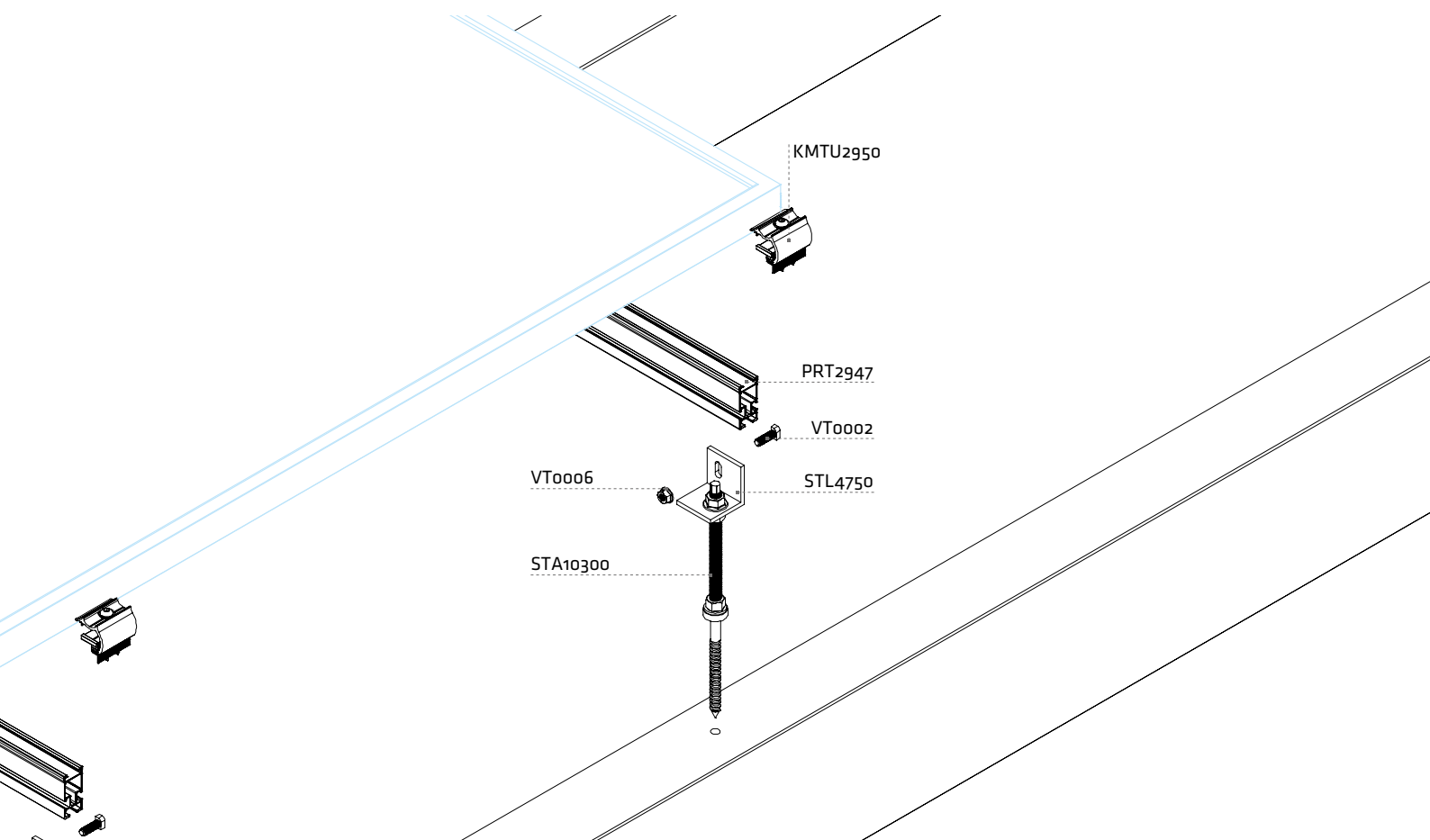


PRT2947-340 3400mm
PRT2947-113 1130mm



PRL2580





Accessori

KMCU2950
Universale centrale



KMTU2950
Universale terminale



ACC0001
ACC0001-M12



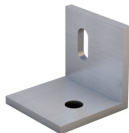
VT1002
Vite testa a martello M10x25



VT0018
Dado flangiato M10



STL4750
STL4750-M12



VT1001
Vite testa a martello M8x25



VT0002
Vite testa a martello M8



VT0006
Dado flangiato M8



VT0009
Rondella M8



VT0001
Vite TE M8x20 - DIN 933



ACC0001-M10D
ACC0001-M12D





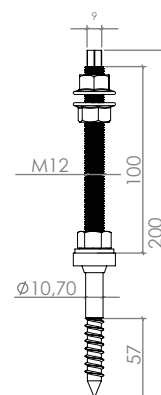
Tetti a falda



Lamiera ondulata

STA12200

Ancorante per legno



Caratteristiche Materiali

Materiale: **X5 CrNi 18-10 (AISI 304)**;

Forma del prodotto: **C (nastro laminato a freddo)**;

Finitura: **2B (nastro trattato termicamente, decapato, skinpassato)**;

Densità: **7,9 g/m³**;

Resistenza alla trazione: **540 – 750 N/mm²**;

Allungamento: **45 % min.**;

Durezza: **82 HRB**.

Caratteristiche Tecniche

Sottostruttura: **Legno**;

Profili compatibili: **PRT2334, PRT2640, PRT2947**;

Guarnizione: **EPDM**.

Certificazioni

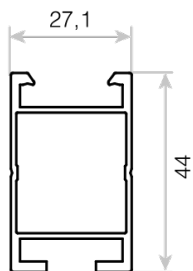
Certificato: **ICIM N. 006DX/3**

Test report: **TECNO-LAB s.r.l.**

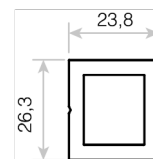


Profili compatibili e rispettive giunzioni

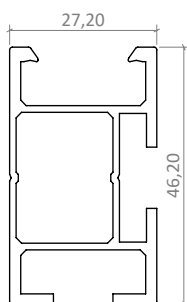
PRT2334-340 3400mm
PRT2334-113 1130mm



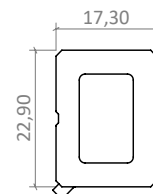
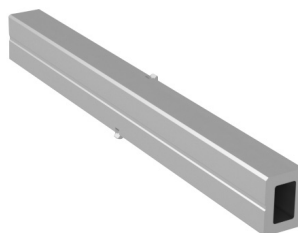
PRL3360



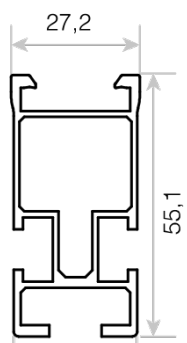
PRT2640-340 3400mm
PRT2640-113 1130mm



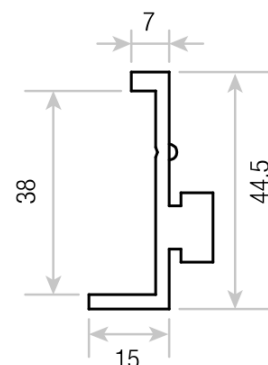
PRG2612



PRT2947-340 3400mm
PRT2947-113 1130mm



PRL2580



Accessori

KMCU2950
Universale centrale



KMTU2950
Universale terminale



ACC0001
ACC0001-M12



VT1002
Vite testa a martello M10x25



VT0018
Dado flangiato M10



STL4750
STL4750-M12



VT1001
Vite testa a martello M8x25



VT0002
Vite testa a martello M8



VT0006
Dado flangiato M8



VT0009
Rondella M8



VT0001
Vite TE M8x20 - DIN 933



ACC0001-M10D
ACC0001-M12D





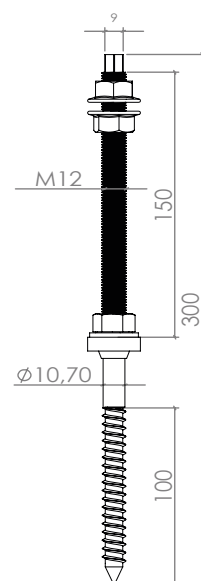
Tetti a falda



Lamiera ondulata

STA12300

Ancorante per legno



Caratteristiche Materiali

Materiale: X5 CrNi 18-10 (AISI 304);

Forma del prodotto: C (nastro laminato a freddo);

Finitura: 2B (nastro trattato termicamente, decapato, skinpassato);

Densità: 7,9 g/m³;

Resistenza alla trazione: 540 – 750 N/mm²;

Allungamento: 45 % min.;

Durezza: 82 HRB.

Caratteristiche Tecniche

Sottostruttura: **Legno**;

Profili compatibili: PRT2334, PRT2640, PRT2947;

Guarnizione: EPDM.

Certificazioni

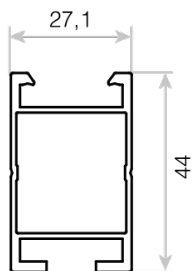
Certificato: ICIM N. 006DX/3

Test report: TECNO-LAB s.r.l.

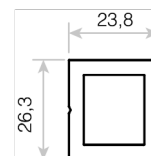


Profili compatibili e rispettive giunzioni

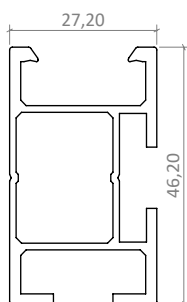
PRT2334-340 3400mm
PRT2334-113 1130mm



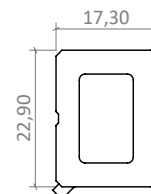
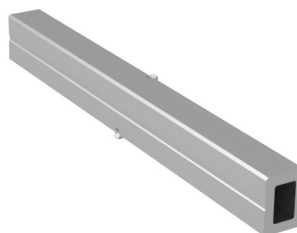
PRL3360



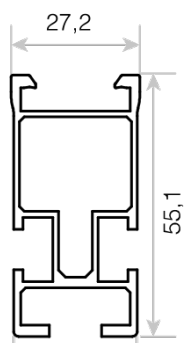
PRT2640-340 3400mm
PRT2640-113 1130mm



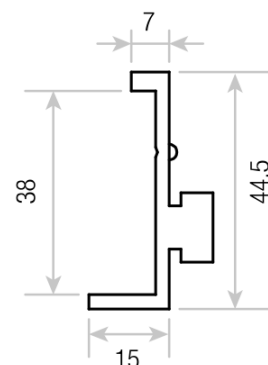
PRG2612



PRT2947-340 3400mm
PRT2947-113 1130mm



PRL2580



Accessori

KMCU2950
Universale centrale



KMTU2950
Universale terminale



ACC0001
ACC0001-M12



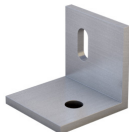
VT1002
Vite testa a martello M10x25



VT0018
Dado flangiato M10



STL4750
STL4750-M12



VT1001
Vite testa a martello M8x25



VT0002
Vite testa a martello M8



VT0006
Dado flangiato M8



VT0009
Rondella M8



VT0001
Vite TE M8x20 - DIN 933



ACC0001-M10D
ACC0001-M12D





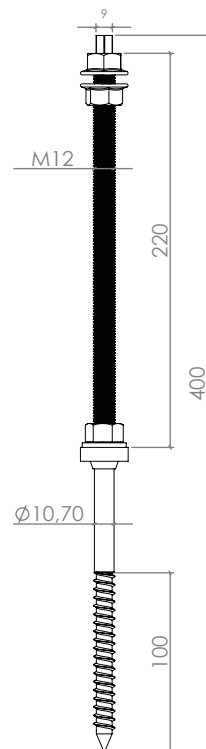
Tetti a falda



Lamiera ondulata

STA12400

Ancorante per legno



Caratteristiche Materiali

Materiale: X5 CrNi 18-10 (AISI 304);

Forma del prodotto: C (nastro laminato a freddo);

Finitura: 2B (nastro trattato termicamente, decapato, skinpassato);

Densità: 7,9 g/m³;

Resistenza alla trazione: 540 – 750 N/mm²;

Allungamento: 45 % min.;

Durezza: 82 HRB.

Caratteristiche Tecniche

Sottostruttura: **Legno**;

Profili compatibili: PRT2334, PRT2640, PRT2947;

Guarnizione: EPDM.

Certificazioni

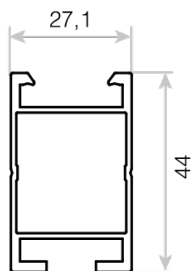
Certificato: ICIM N. 006DX/3

Test report: TECNO-LAB s.r.l.

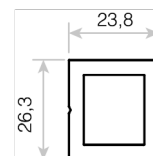


Profili compatibili e rispettive giunzioni

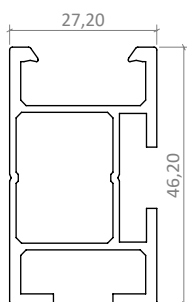
PRT2334-340 3400mm
PRT2334-113 1130mm



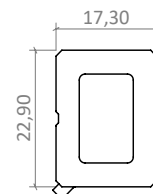
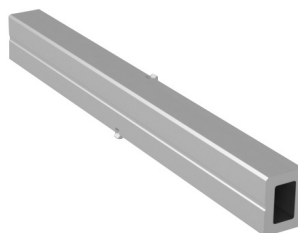
PRL3360



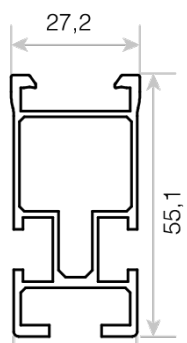
PRT2640-340 3400mm
PRT2640-113 1130mm



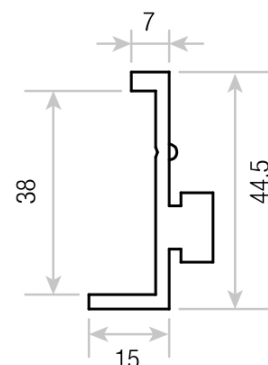
PRG2612



PRT2947-340 3400mm
PRT2947-113 1130mm



PRL2580



Accessori

KMCU2950
Universale centrale



KMTU2950
Universale terminale



ACC0001
ACC0001-M12



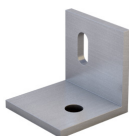
VT1002
Vite testa a martello M10x25



VT0018
Dado flangiato M10



STL4750
STL4750-M12



VT1001
Vite testa a martello M8x25



VT0002
Vite testa a martello M8



VT0006
Dado flangiato M8



VT0009
Rondella M8



VT0001
Vite TE M8x20 - DIN 933



ACC0001-M10D
ACC0001-M12D

